



The anniversary logo, which features the Ohio State's symbol, the buckeye leaf (*Aesculus glabra*), has the added distinction of *Guignardia* lesions (a common fungal pathogen of the buckeye tree). The logo was designed by Karasi Mills for the 50th anniversary.



July 1, 2017 - 50th Anniversary of the Department of Plant Pathology

*Photos by Ellen Mitchell
and M. Lewandowski*



50th Anniversary of the Department of Plant Pathology - Longaberger Alumni House



50th Anniversary of the Department of Plant Pathology - Signature quilt, made by Terry Niblack



50th Anniversary of the Department of Plant Pathology - Reception desk



L to R: Coralie Farinas, Sarah Williams, Steve Slack



L to R: Jorge David Salgado, Ram Khadka, Anna Stasko



July 1, 2017 - 50th Anniversary of the Department of Plant Pathology





50th Anniversary
of the establishment of the
Department of Plant Pathology
Looking Back While Moving Forward
July 1, 2017 - 12 noon
The Ohio State University • Longaberger Alumni House

~ **Program** ~

Master of Ceremonies
Larry Madden, Distinguished Professor of Plant Protection and
Chair, Department of Plant Pathology, The Ohio State University

Commemorating the Department's History

Randall Rowe, Professor Emeritus
Former chair, Department of Plant Pathology

Rachel Capouya and Karasi Mills
Plant Pathology Graduate Students Association

Terry Niblack, Interim Senior Associate Dean
College of Food, Agricultural, and Environmental Sciences

Ira Deep, Professor Emeritus
First chair of the Department of Plant Pathology

Ramona Powell, Department of Plant Pathology

Concluding Remarks

50th Anniversary Committee

Monica Lewandowski, chair • Larry Madden • Michael Ellis • Ramona Powell
Karasi Mills • Thomas Mitchell • Sarah Williams • Lee Wilson

Traditional Irish Music Session with Dave Coplin and Friends
David Coplin, fiddle - Carol Smith, fiddle - Sheree Green, fiddle
Stuart Brand, fiddle - Larry Dulin, flute - Rick Nelson, guitar
Chris Young, harmonica - Dave Scardena, bodhran

Logo artwork by Karasi Mills





July 1, 2017 - 50th Anniversary of the Department of Plant Pathology



July 1, 2017 - 50th Anniversary of the Department of Plant Pathology



L to R: Terry Niblack, Brutus, Larry Madden



Lee Wilson





Traditional Irish musical entertainment: David Coplin, fiddle - Carol Smith, fiddle - Sheree Green, fiddle
Stuart Brand, fiddle - Larry Dulin, flute - Rick Nelson, guitar - Chris Young, harmonica - Dave Scardena, bodhran











L to R: Carol Musselman, John Abt, Ira Deep





Seated, Ira Deep (L) and Annie Marie Garraway
Standing, L to R, Craig Deep, Terri Price-Deep, Brian Deep



L to R: Zack Kerby, *Amanda (Williams) Kerby and *Nick Williams
*Lansing Williams' grandchildren





L to R: Carol Musselman, Bonnie Littleton, Jo Hershberger



L to R: Ira Deep, talking to Jeanne Kiser





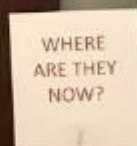
L to R: Zhenzhen Zhao, Shan Lin and Karasi Mills



July 1, 2017 - 50th Anniversary of the Department of Plant Pathology



July 1, 2017 - 50th Anniversary of the Department of Plant Pathology



Favorite Memories



Lanny Rhodes (right) came to the department to get a copy of Plant Pathology in Ohio from Randy Rowe in June. Lanny sends his regards as he is out of town this weekend. Yes, he still looks the same!



Dan Arko, Hela Wang and family
Clemson University
Edisto Research and Education Center
Blackville, SC



Carolyn Young
Editor, Phytobiomes
Journal



Jim Chatfield

"After we finally approached the laboratory, plant growth resumed and greenhouse space provided to me, we worked and produced in winter 1991!"



Memories



"We had a terrific group of people working on their graduate research at Wooster. We taught in the lab and moved on to be closer to the city. Many of the students moved to the city. Many of the students moved to the city. Many of the students moved to the city."

Larry Grimm
Director, School of Agriculture

Memories

"Best memories are of sitting at my desk with a student, and suddenly their eyes brighten and the balls go off when they finally see what we've been talking about!"

Nancy Taylor



Phil Larsen

From Phil Larsen
OSU Centennial Celebration - July 13, 2017

Congratulations on your 50 years of service to students and the State of Ohio in providing the class education and inspiration in plant disease research and education. I was on the faculty from 1955 to 1994. I was always proud to be a part of the Department when I was there and still have great and positive memories of the time I spent and of my colleagues in the Department.

The Plant Pathology department at Ohio State had just formed a brand new department in Columbus, when I arrived as a new Assistant Professor. I had previously the Department had been the Botany and Plant Pathology Department. I was the new Department Head and was a student and undergraduate mentor to me as I began my career as a University professor. I will always be grateful to him for his leadership in those early days.

The Department allowed me to move in my teaching responsibilities from Introductory Plant Pathology to Epidemiology and Control of Plant Diseases, Bacterial Plant Pathogens, Diseases of Horticultural Plants, and Grasses and Grasses. My research interests ranged from research on Southern Corn Leaf Blight to diseases of turf grass. In the later years, I was fortunate to be a contributing member of an excellent interdisciplinary team of turf scientists included faculty from the Departments of Agronomy and Entomology. The Department also provided me the opportunity to serve as Professor in the Plant Protection Program, an interdisciplinary undergraduate program focused on learning about integrated pest management strategies. This coursework and internship experiences associated with the Plant Protection Program provided students with excellent preparation for jobs in products agriculture and agribusiness.

In January, 1985, I moved to the University of Minnesota to become the Plant Pathology Department there. Later, I served as Senior Associate, the College of Agriculture at the University of Minnesota. I retired in 2017.

Again, congratulations to all who have had a part in making the Plant Pathology department at OSU be the excellent unit it has been. You have made a contribution to agriculture in Ohio and worldwide. All the best to each of you.

Philip O. Larsen

Memories

"My fondest memories of being an undergrad in Plant Pathology was when I worked for Dr. Larsen. I assisted with turf pathology research at Kottman Hall and outside locations. I spent much time preparing and pouring agar into petri dishes, infecting cups of turf grass, and applying fungicides.

The world of research and pesticides was fascinating! So much so, that I applied for a job that was posted on the Plant Pathology job board with the Ohio Department of Agriculture. I got that job and had a 32-year career regulating pesticides."

Favorite Memories



Lanny Rhodes (right) came to the department to get a copy of Plant Pathology in Ohio from Randy Rowe in June. Lanny sends his regards as he is out of town this weekend. Yes, he still looks the same!



Dan Arko, Heli Wang and family
Clemson University
Edisto Research and Education Center
Blackville, SC



Carolyn Young
Editor, Phytobiomes
Journal



Jim Chatfield

"After we finally approached the laboratory, plant growth curves and greenhouse space provided to me, we worked and produced in winter 1991."



Memories



"We had a terrific group of people working on their graduate research at Wisconsin. We stayed in the lab and moved on to be closer to the university of one another. Many of them in the CHURCH, north of the lab, but no paper and then catch a beer at the gym."

Larry Grimm
Director, School of Science

Memories

"Best memories are of sitting at my computer with a student, and suddenly their eyes brighten and the balls go off when they finally see what we've been talking about."

Nancy Taylor



Phil Larsen

From Phil Larsen
OSU Centennial Celebration - July 13, 2017

Congratulations on your 50 years of service to students and the State of Ohio in providing the class education and inspiration in plant disease research and education. I was on the faculty from 1955 to 1994. I was always proud to be a part of the Department when I was there and still have great and positive memories of the time I spent and of my colleagues in the Department.

The Plant Pathology department at Ohio State had just formed a brand new department in Columbus, when I arrived as a new Assistant Professor in late 1955. Previously the Department had been the Botany and Plant Pathology Department. I was the new Department Head and was a student and undergraduate mentor to me as I began my career as a University professor. I will always be grateful to him for his leadership in those early days.

The Department allowed me to move in my teaching responsibilities from Introductory Plant Pathology to Epidemiology and Control of Plant Diseases, Bacterial Plant Pathogens, Diseases of Horticultural Plants, and Grasses and Grasses. My research interests ranged from research on Southern Corn Leaf Blight to diseases of turf grass. In the later years, I was fortunate to be a contributing member of an excellent interdisciplinary team of turf scientists included faculty from the Departments of Agronomy and Entomology. The Department also provided me the opportunity to serve as Professor in the Plant Protection Program, an interdisciplinary undergraduate program focused on learning about integrated pest management strategies. This coursework and internship experiences associated with the Plant Protection Program provided students with excellent preparation for jobs in products agriculture and agribusiness.

In January, 1985, I moved to the University of Minnesota to become the Plant Pathology Department there. Later, I served as Senior Associate, the College of Agriculture at the University of Minnesota. I retired in 2017.

Again, congratulations to all who have had a part in making the Plant Pathology department at OSU be the excellent unit it has been. You have made a contribution to agriculture in Ohio and worldwide. All the best to each

Philip O. Larsen

Memories

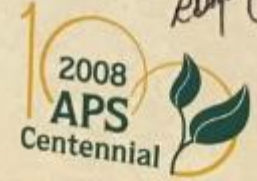
"My fondest memories of being an undergrad in Plant Pathology was when I worked for Dr. Larsen. I assisted with turf pathology research at Kottman Hall and outside locations. I spent much time preparing and pouring agar into petri dishes, infecting cups of turf grass, and applying fungicides."

The world of research and pesticides was fascinating! So much so, that I applied for a job that was posted on the Plant Pathology job board with the Ohio Department of Agriculture. I got that job and had a 32-year career regulating pesticides.

WHERE ARE THEY NOW?



Students, staff, faculty, and alumni of the Department of Plant Pathology at the 100th Annual Meeting of the American Phytopathological Society in Minneapolis, Minnesota, July 26-30, 2008.



PLEASE SIGN
THE QUILT
TH

A collection of various items laid out on a white tablecloth, including:

- Several small photographs of people, some with captions like "Campus La Torre Cuba Ph.D. University of Missouri" and "Edison Fowlke sends his regards".
- A larger photograph of a man in a lab coat, with a caption "Christian Cook Kansas State Univ".
- A flyer titled "SCHOOL OF SCIENCE" with a photo of a person and the text "Edison Fowlke sends his regards".
- A flyer titled "Listen and learn More than seeing is believing" with a photo of a person and text about a plant identification guide.
- Other smaller flyers and documents, some with photos of groups of people.









TERRENCE L. GRAHAM
Professor
Molecular Disease Resistance



PIERLUIGI BONELLO
Assistant Professor
Tree Pathology and Ecology



Sally Miller, Casey Hoy



Anne Dorrance, Pat Lipps



Feng Qu (L) and Mike Ellis



L to R: Brutus and Sarah Williams



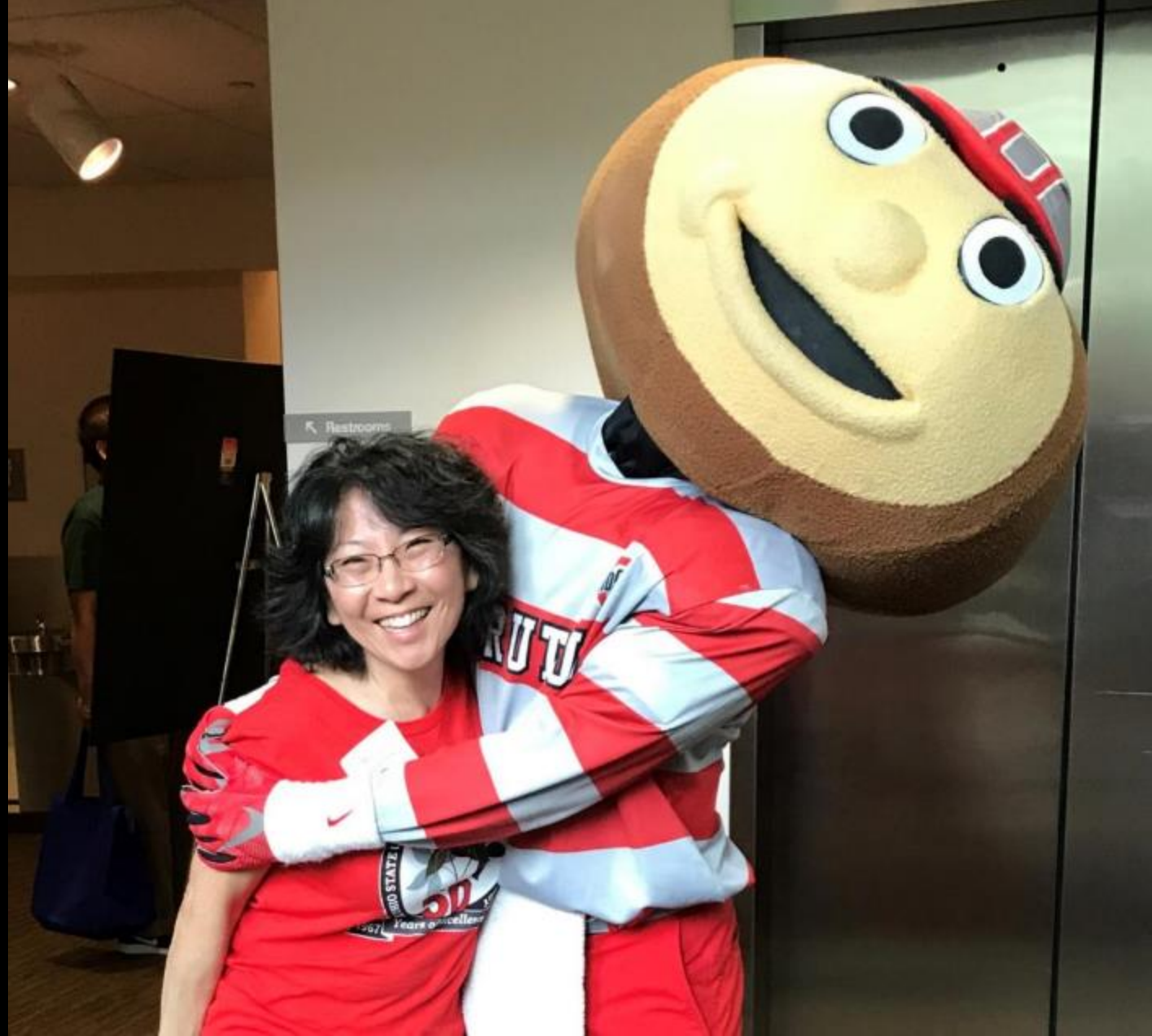
Chip Styer (L) and Sally Miller



Terry Niblack (L) and Mike Ellis



Ye Xia (L) and Tom Mitchell



Monica Lewandowski (L) and Brutus





Leona Horst (L) and David Showalter



Steve Nameth (L) and John Stier



L to R: Abasola Simon, Barbara Hodgdon, Claudio Vrisman



L to R: Sarah Williams, Emile Gluck Thaler, and Karasi Mills



L to R: Randy Rowe, Helga Beke







L to R: Nikki Tate, Maria Bellizzi, Pavinee Suttivitiya, Timothy Frey





L to R: Abasola Simon and Brutus



L to R: Randy Rowe, Mike Ellis, Guo-Liang Wang









L to R: Floyd Poruban, Richard Poruban and Tom Mitchell



L to R: Francine Chimelo Paim, Brutus and Felipe Dalla Lana da Silva



Chan Ho Park and family



Randy and Sandra Rowe



Kelsey Scott and Andrew Patt



L to R: Floyd Poruban, Richard Poruban, Fritz Schmitthenner





L to R: Ambria Small, Timothy Betz, Crystal Van Pelt



L to R: Nathan Tuttle and Anne Dorrance



L to R: Anna Stasko, David Showalter, Kelsey Andersen, Anna Testen





From top, clockwise, Felice Fike, Phoenix Fike and Elizabeth Fike



Randy Rowe (L) and Zak Ralston



Randy Rowe (L) and Judy O'Donnell



L to R: Zhen Zhang, Brutus, Guo-Liang Wang



Veena Deviganeshan, Vinod Vijayakumar and family





Nancy Taylor (L), Jeanne Kiser





Cathy Reinoehl (L) and Judy O'Donnell



L to R: Enrico Bonello, Tea Meulia, Rosie Bonello









Mike and Kristina Kelly



L to R: Patrick Sherwood, Kelsey Andersen, Jorge David Salgado



Katherine Whitten Buxton, Jake Buxton and family





Sara Warner (L) and Carol Reinoehl



Fides Zaulda (L) and Rong Sun



Jan and Jim Leonard



Abasola Simon (L) and Zak Ralston



Anne Dorrance and Francesca Hand





Wang Lab: L to R, Chenfeng Long, Pengfei Bai, Guo-Liang Wang, Maria Bellizzi, Pavinee Suttiviriya, Jiyang Wang, Dayoung Lee





Susie Slack and Larry Madden





Junping Han



Kelli and Todd Hicks



L to R: Zac Denning, Laurel and John Leedy, Kyle Lichti



Chris Ellis (L) and Kim Wilson



Val and John Stier



Wanderson Bucker Moraes (L) and Pierce Paul



Randall Rowe was presented with a framed book cover, in appreciation for work as author of *Plant Pathology in Ohio: A History of the Discipline at The Ohio State University and the Ohio Agricultural Research and Development Center*.



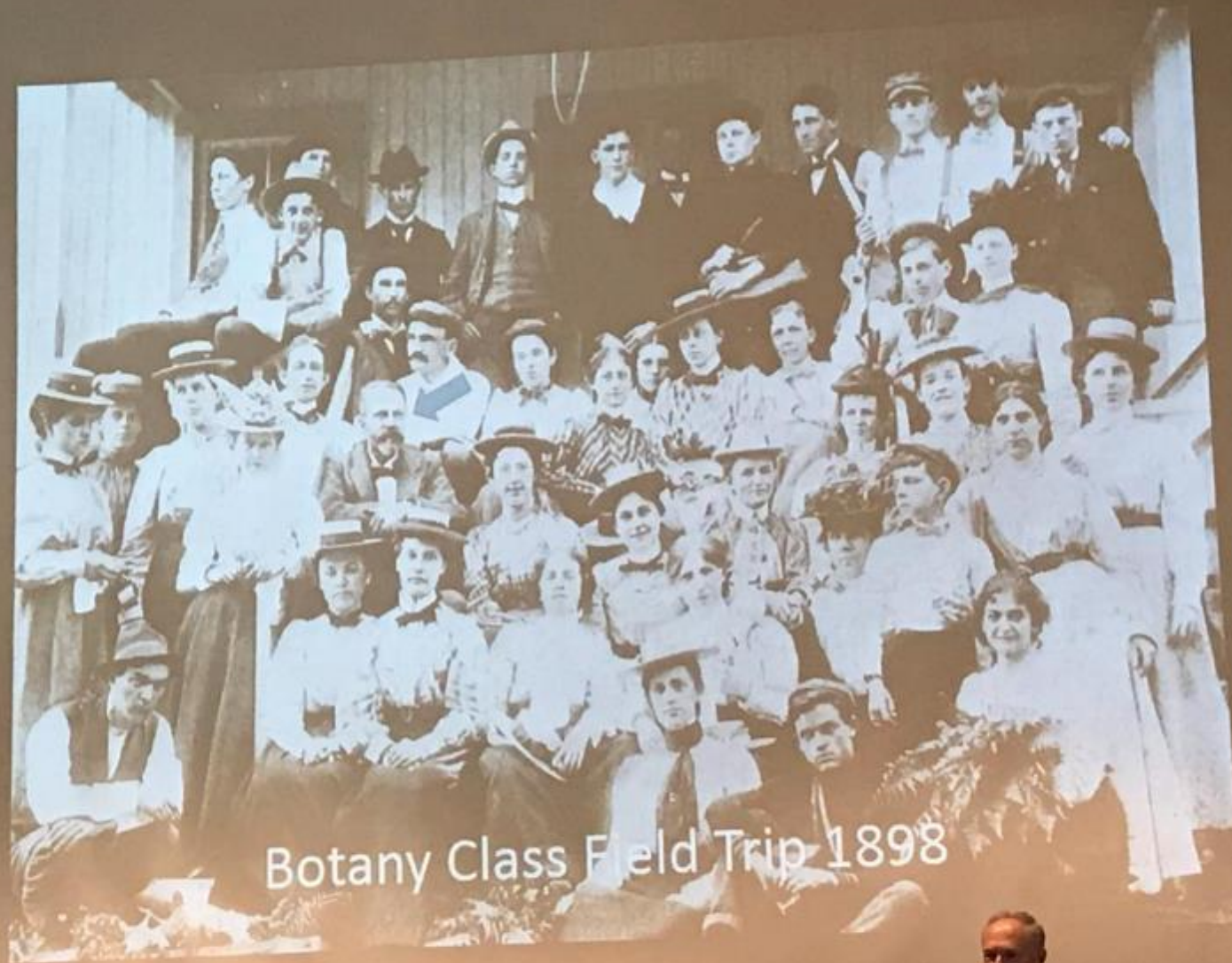
Karasi Mills (L) and Rachel Capouya, vice president and president, respectively, of the Plant Pathology Graduate Students Association, shared highlights of the Plant Pathology Graduate Program.



Ira Deep, the first chair of the department, shared many memories and stories.

PLANT PATHOLOGY
ELECTRON MICROSCOPY
ENVIRONMENTAL STUDIES





Botany Class Field Trip 1898





Terry Niblack, announced the establishment of the Ira Deep and Lansing Williams Plant Pathology Fund to support graduate education. The fund honors Deep, the department's first chair in 1968, and the late Williams, who worked closely with Deep as the first associate chair and leader of the plant pathology unit at the Ohio Agricultural Research and Development Center (OARDC) in Wooster.



In addition to celebrating the Department of Plant Pathology's 50th Anniversary, we acknowledged Randy and Sandra Rowe's 50th wedding anniversary, and Ira Deep's 90th birthday.





On July 2, we held a get-together at OARDC - Wooster and reminisced with (L to R): Jenny Moyseenko, Skip Nault, Randy Rowe, Jo Hershberger, Ray Louis, Fritz Schmitthenner, and Carol Musselman.



July 2, 2017 - Selby Hall, OARDC Wooster campus



Larry Madden (L) and Skip Nault



